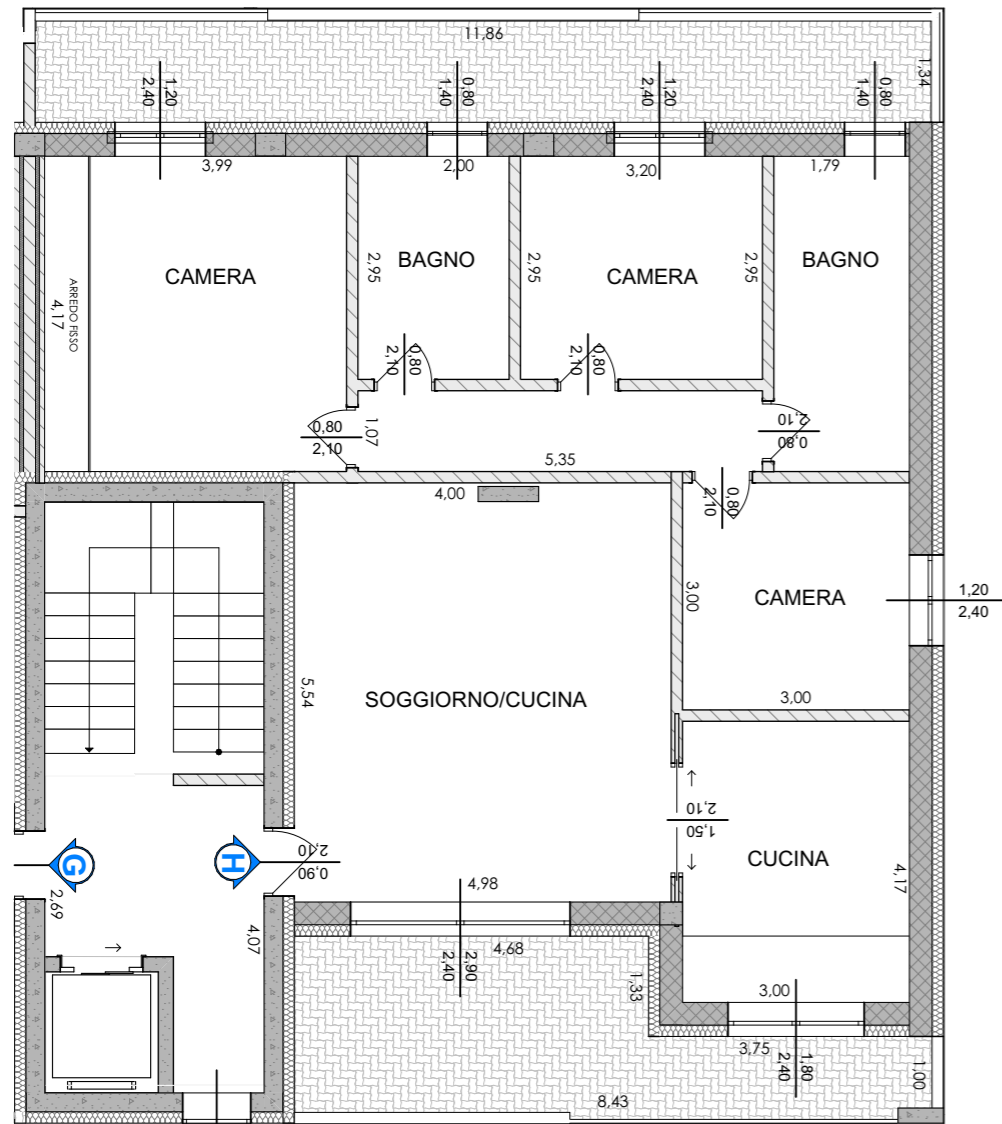
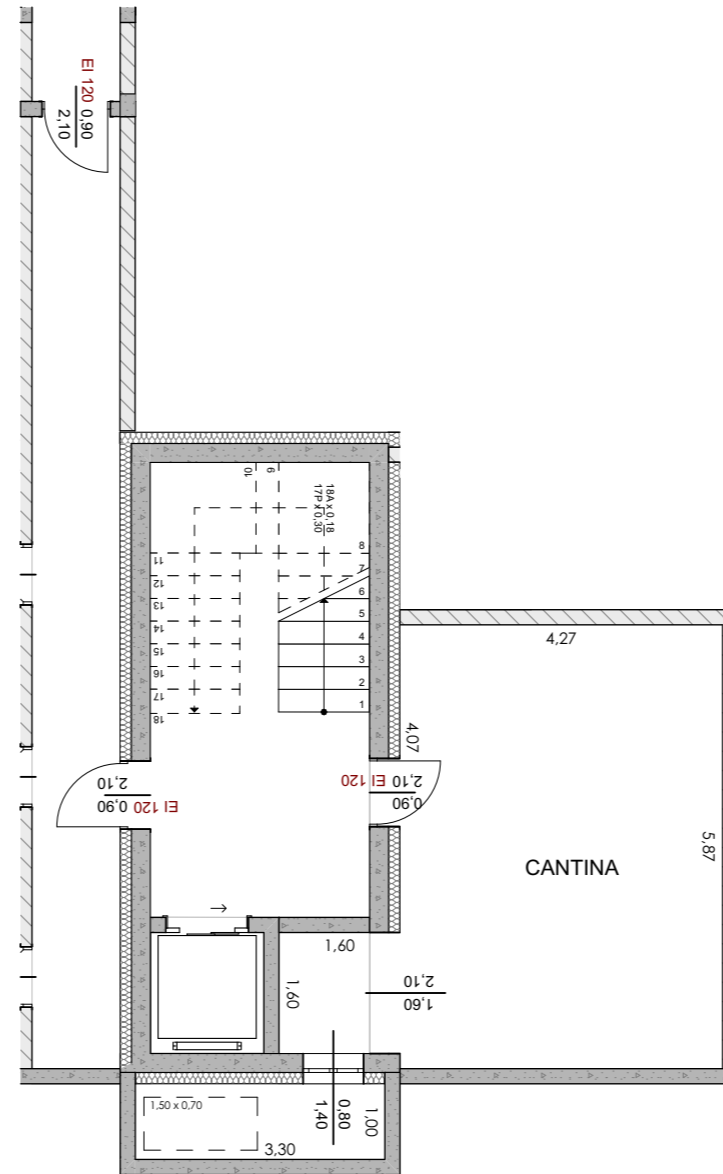


PIANO PRIMO



| | | |
|---------------------------|--------|----------------|
| SUPERFICIE RESIDENZIALE: | 115,90 | m ² |
| PORTICI E BALCONI: | 34,20 | m ² |
| CANTINE ED INTERCAPEDINI: | 36,40 | m ² |
| BOX-AUTO: | 47,70 | m ² |

PIANTA PIANO INTERRATO



PIANO SECONDO

H



- 3 X
- 2 X
- 2 X
-

