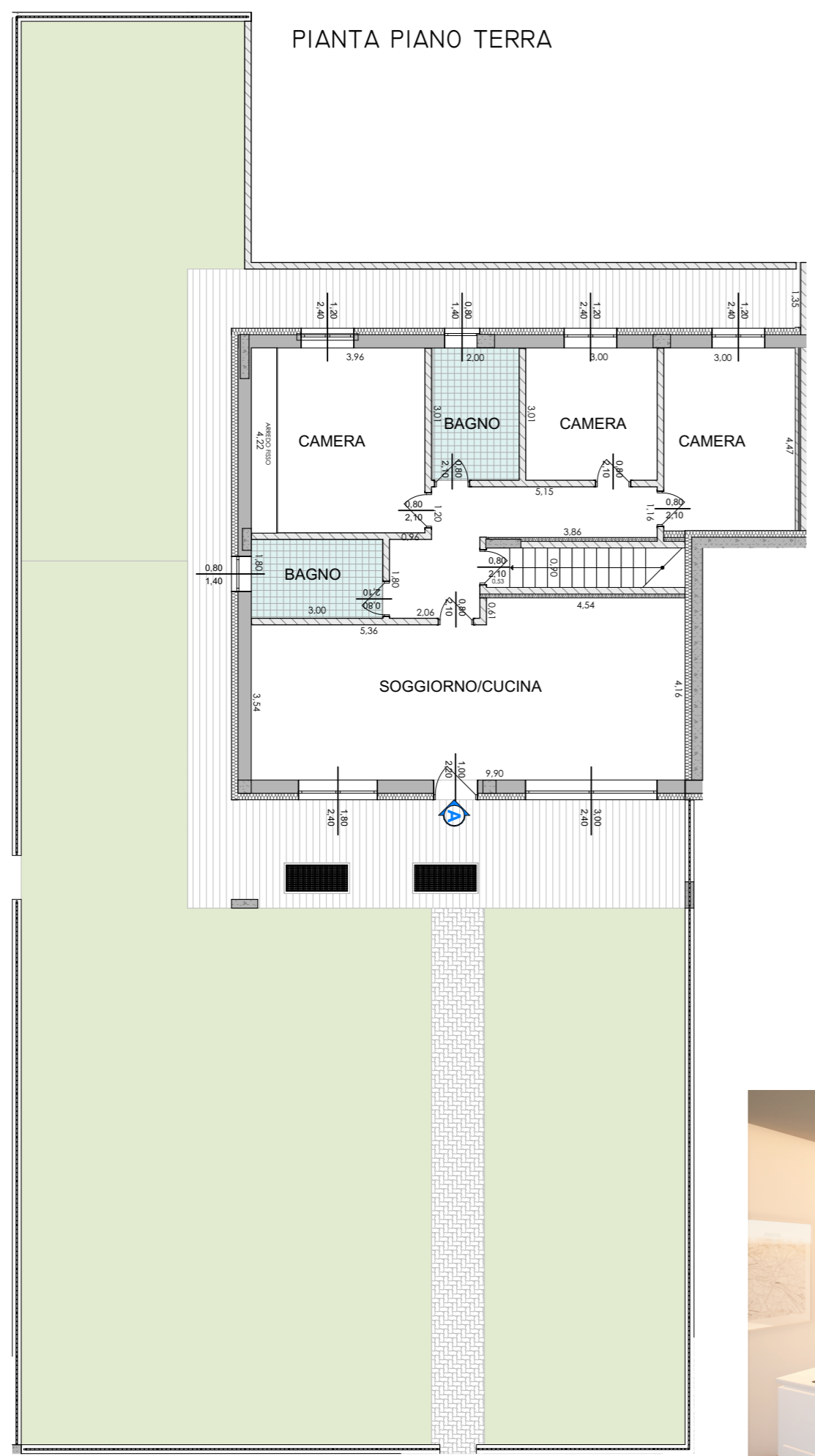
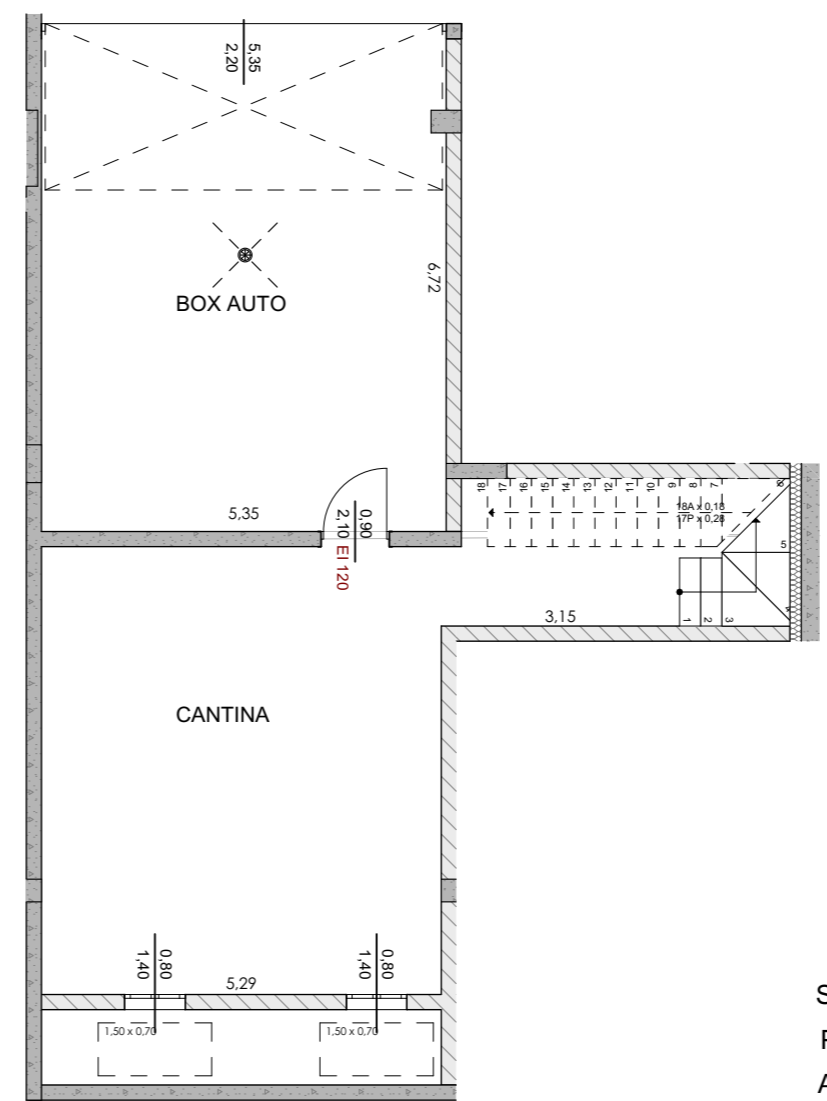









PIANTA PIANO TERRA



PIANTA PIANO INTERRATO



-  3 X 
- 2 X 
- 2 X 
- 

SUPERFICIE RESIDENZIALE:	125,90	mq
PORTICI E BALCONI:	44,50	mq
AREA ESTERNA DI COMPETENZA:	296,60	mq
CANTINE ED INTERCAPEDINI:	47,50	mq
BOX-AUTO:	38,20	mq

